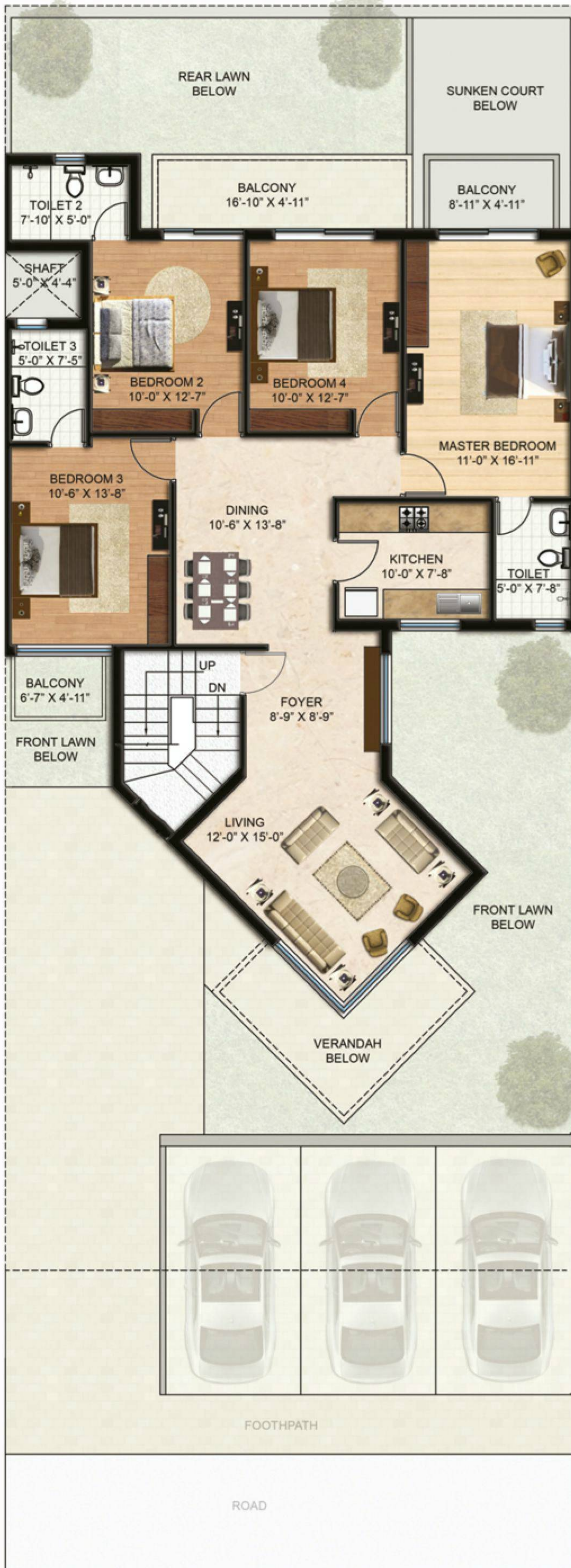
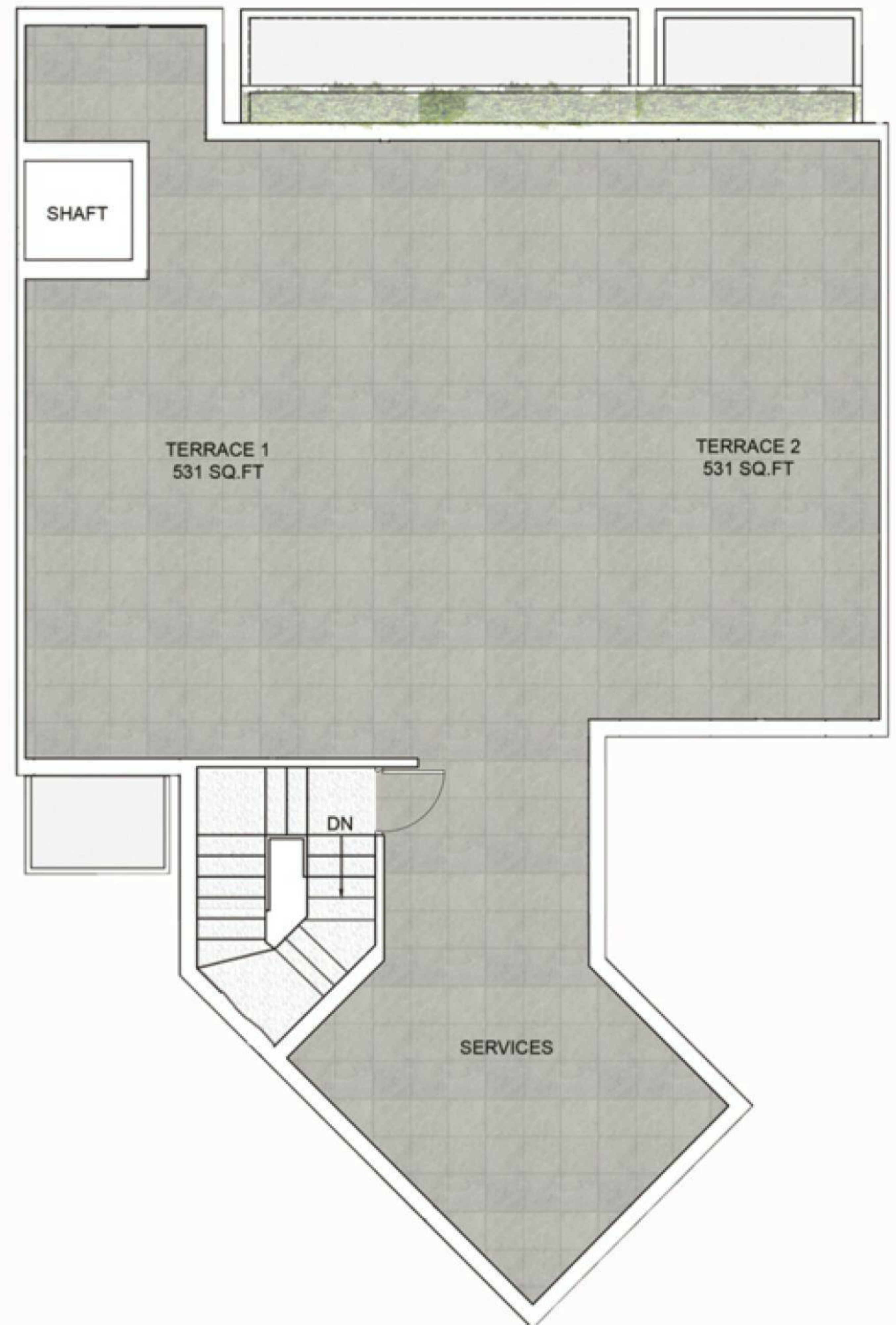


### First / Second Floor Plan



### Terrace Plan



Plot Size		Floor	Built-up Area		Lawn/Terrace (Approx.)		Total Usable	
(In Sq.yds.)	(In Sq.m.)		(In Sq.ft.)	(In Sq.m.)	(In Sq.ft.)	(In Sq.m.)	(In Sq.ft.)	(In Sq.m.)
350 (4 BHK+3T)	292.64 (4 BHK+3T)	FF	1730	160.7	531	49.3	2261	210.1
		SF	1730	160.7	531	49.3	2261	210.1

1 Sq.m. = 1.196 Sq.Yds. | 1 Sq.m. = 10.764 Sq.Ft.  
Areas are subject to change.